

Geistlich **SafeScraper** TWIST

Cortical Bone Collector



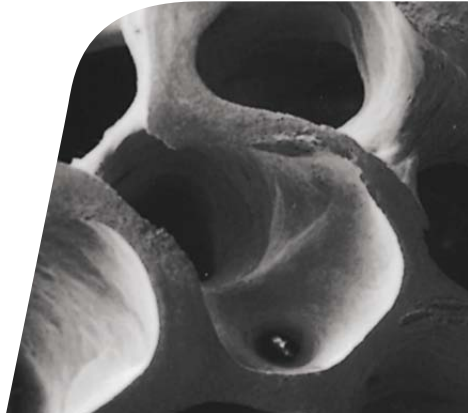
Curved Version

Geistlich
Biomaterials

CE
0123

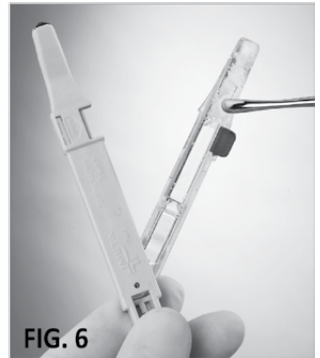
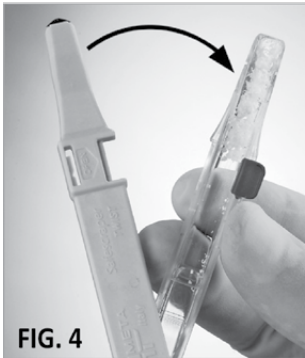
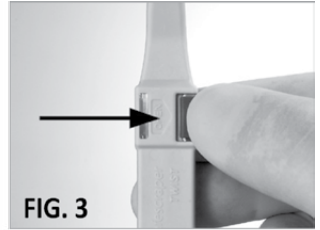
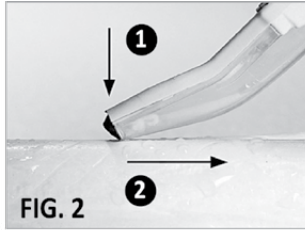
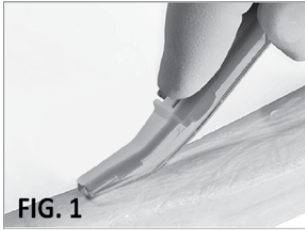


STERILE EO



INSTRUCTIONS FOR USE



Cortical Bone Collector



Geistlich SafeScraper TWIST

INTENDED USE

The Geistlich SafeScraper TWIST (*Curved Version*) is a tool designed for the drawing and collecting of autogenous bone for use in regenerative procedures in oral surgery.

- Before use, check that the package is intact.
 - Do not use the product if the package is damaged.
 - The Geistlich SafeScraper TWIST must be used exclusively by a skilled clinician.
 - The clinician must assess the suitability of patients for bone grafting and the appropriate surgical procedure.
 - The clinician must take all necessary precautions to prevent the risk of infection and complications associated with bone grafting.
-  **Warning:** if it is reused on another patient, there is a risk of cross-contamination and loss of performance and functional characteristics of the device.
- The Geistlich SafeScraper TWIST is a single-use instrument. DO NOT clean or sterilize after use.
 - Always wear sterile gloves when handling the Geistlich SafeScraper TWIST device and strictly follow the procedures in order to guarantee a sterile environment. Make sure you do not cut sterile gloves with the sharp end of the tool.
 - Discard after use in special medical waste containers in compliance with the regulations in force.
 - The manufacturer does not bear any responsibility for improper use of the product.
- 1 Open the package from the side showing the symbol. 
Lay the device on a sterile field and strictly follow the procedures in order to guarantee a sterile environment.
 - 2 The device must be held with the transparent reservoir facing towards the bone. Hold the Geistlich SafeScraper TWIST securely to ensure precise movements during use (see Fig. 1).
 - 3 Collect the bone by pushing the end of the device towards the surface of the bone while simultaneously pulling the device in a backward motion (see Fig. 1). The bone can also be collected with oblique and sideways movements. Vary the angle of the device and the pressure applied to obtain the required consistency of bone chips or shavings. The Geistlich SafeScraper TWIST reservoir can store up to 2.5 cc of bone.
 - 4 To collect the bone, keep the transparent reservoir facing downward, set the device to the locked position and slide the reservoir clockwise (see Fig. 3-4).

To continue collecting additional bone or before disposing the Geistlich SafeScraper TWIST, place the reservoir back into its original position and push the button laterally to engage the reservoir lock position (see Fig. 5).

Utilize forceps or a spoon type style elevator to transfer the bone chips to the defect site (see Fig. 6).

USEFUL TIPS

In the event of poor cutting quality, adjust the angle of the device and apply additional pressure on the bone. If this does not provide improved performance then the blade may be worn. Change the device.

These instructions for use as well as further information about the Geistlich SafeScraper TWIST are available online: www.geistlich-na.com

Geistlich **SafeScraper** TWIST

Geistlich
Biomaterials

Customer Care
Toll-free 855-799-5500

www.geistlich-na.com

Geistlich Pharma North America, Inc.
202 Carnegie Center
Princeton, NJ 08540



C.G.M. S.p.A.
DIVISIONE MEDICALE META

Via E. Villa, 7 - 42124 Reggio Emilia - ITALY

G-265-15P REV.00