



Protecting Your Success with Our Proven Membrane

Geistlich Bio-Gide®
Geistlich Bio-Gide® Compressed
Geistlich Bio-Gide® Shape
Geistlich Bio-Gide® Perio

leading regeneration

Geistlich

Geistlich Bio-Gide® is the leading collagen membrane in North America for oral tissue regeneration^{1,2}

Geistlich Bio-Gide® is a resorbable collagen membrane that integrates with surrounding tissues to protect the initial coagulum and then optimally degrades to allow for early vascularization and the cascade of biologic events leading to regeneration.³⁻⁵



Unique Bilayer Structure

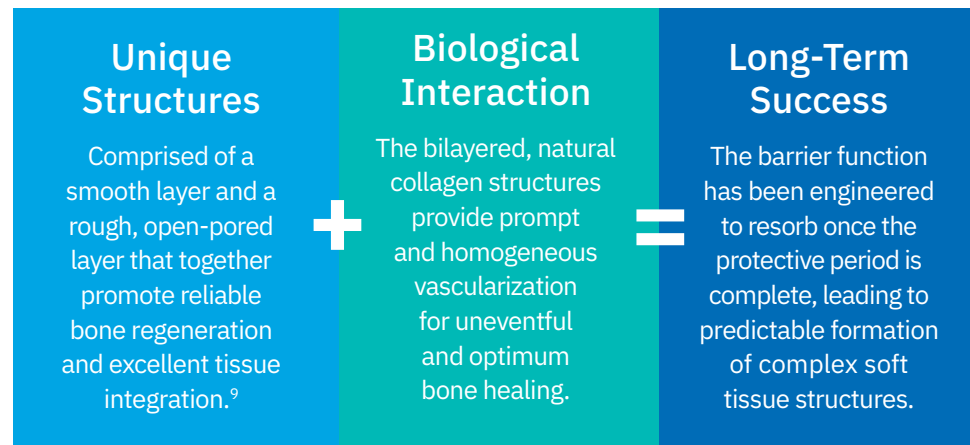
The bilayer structure of Geistlich Bio-Gide® is a semi-permeable membrane that permits nutrition transfer and fast vascularization through its natural bilayer structure. This unique bilayer structure is designed with both a cell occlusive and a fibrous surface which protects the site during healing and allows for the deposition of proteins.¹³

These properties, in combination with an optimally-timed barrier function, prevent premature growth of soft tissue into the defect and create an environment for the appropriate cascade of biological events.^{3,5,8,9,14-19} This intentional design ensures optimal regenerative healing of bone and soft tissue.

Proven with Predictable Outcomes

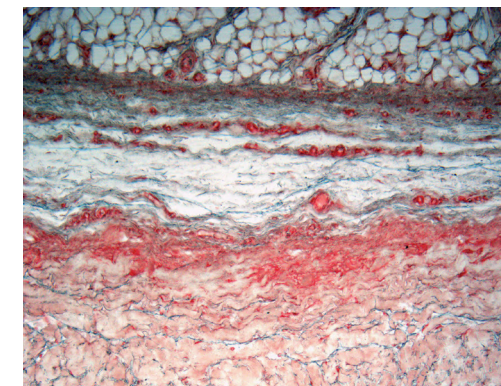
For more than 20 years Geistlich Bio-Gide® has been proven to provide predictable outcomes due to these key properties:

- › Unique bilayer structure
- › Uneventful wound healing⁶
- › Optimum bone healing⁷
- › Prompt and homogeneous vascularization⁸
- › Optimal barrier time

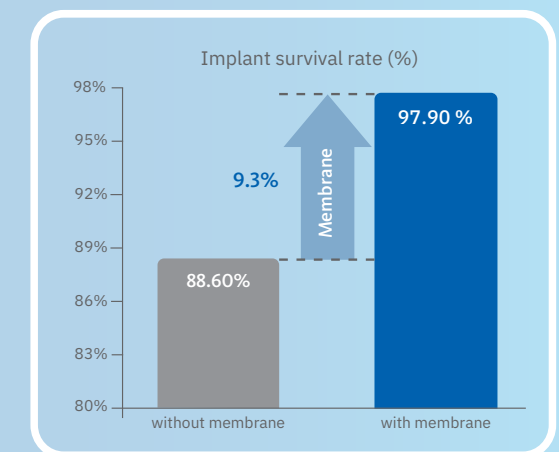


Vascularization Leads to Integration⁸

Immunohistochemical representation of angiogenesis and tissue integration. PD Dr. Schwarz, Düsseldorf, Germany.



More bone volume and improved bone quality lead to a higher implant survival rate²⁰



“The use of Geistlich Bio-Gide® resulted in fewer implant losses, compared to other membranes. The most predictable outcome is achieved with Geistlich Bio-Gide®.”²¹

– Wolfram Knöfler

Proven Collagen Expertise

Our proprietary process yields natural structures containing native collagen fibers which allow the body to reliably accept and integrate into the material. The preservation of native fibers ensures that vital building blocks are present to promote the initial biologic processes of cell adhesion and proliferation.¹⁰⁻¹²

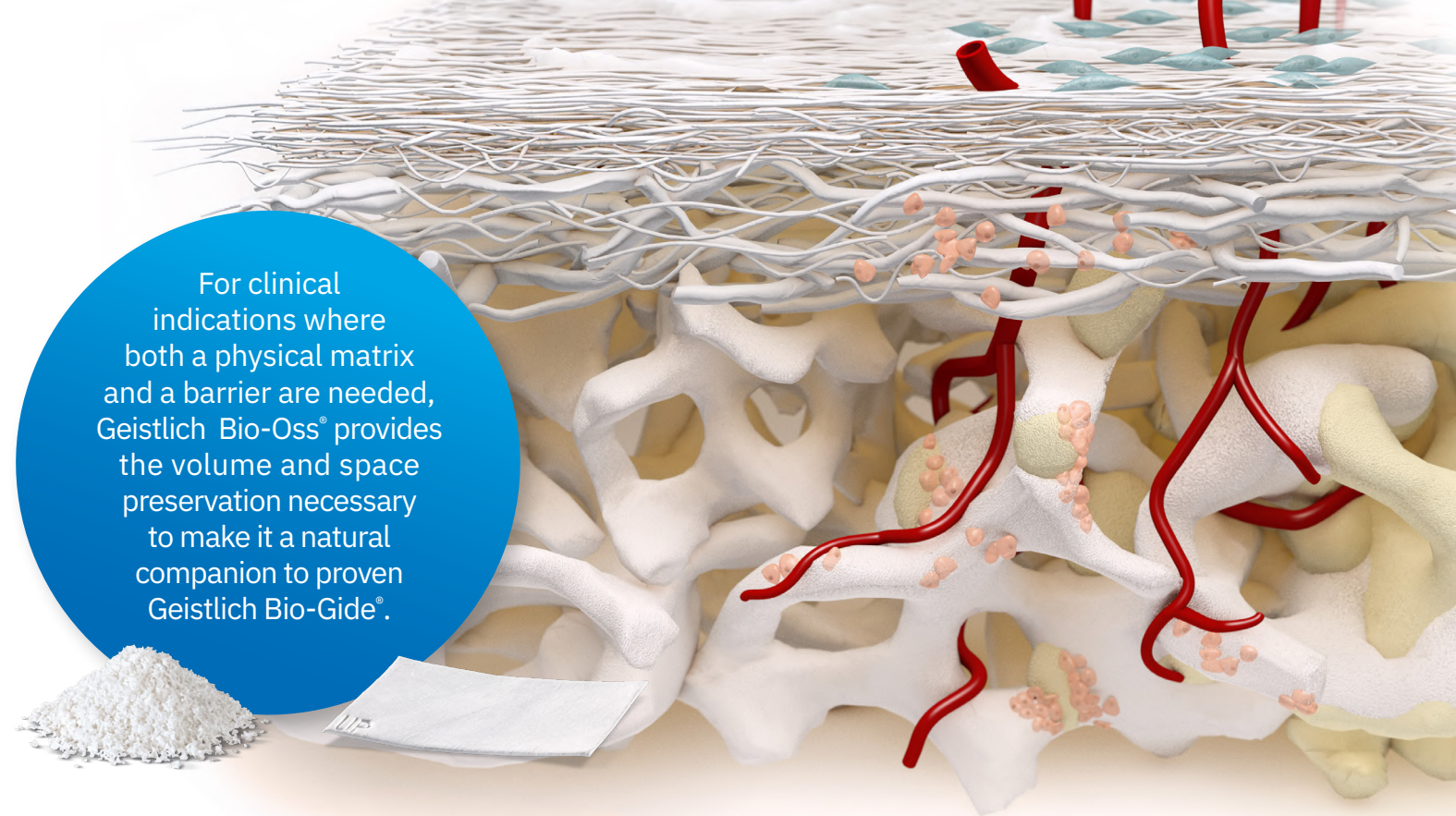
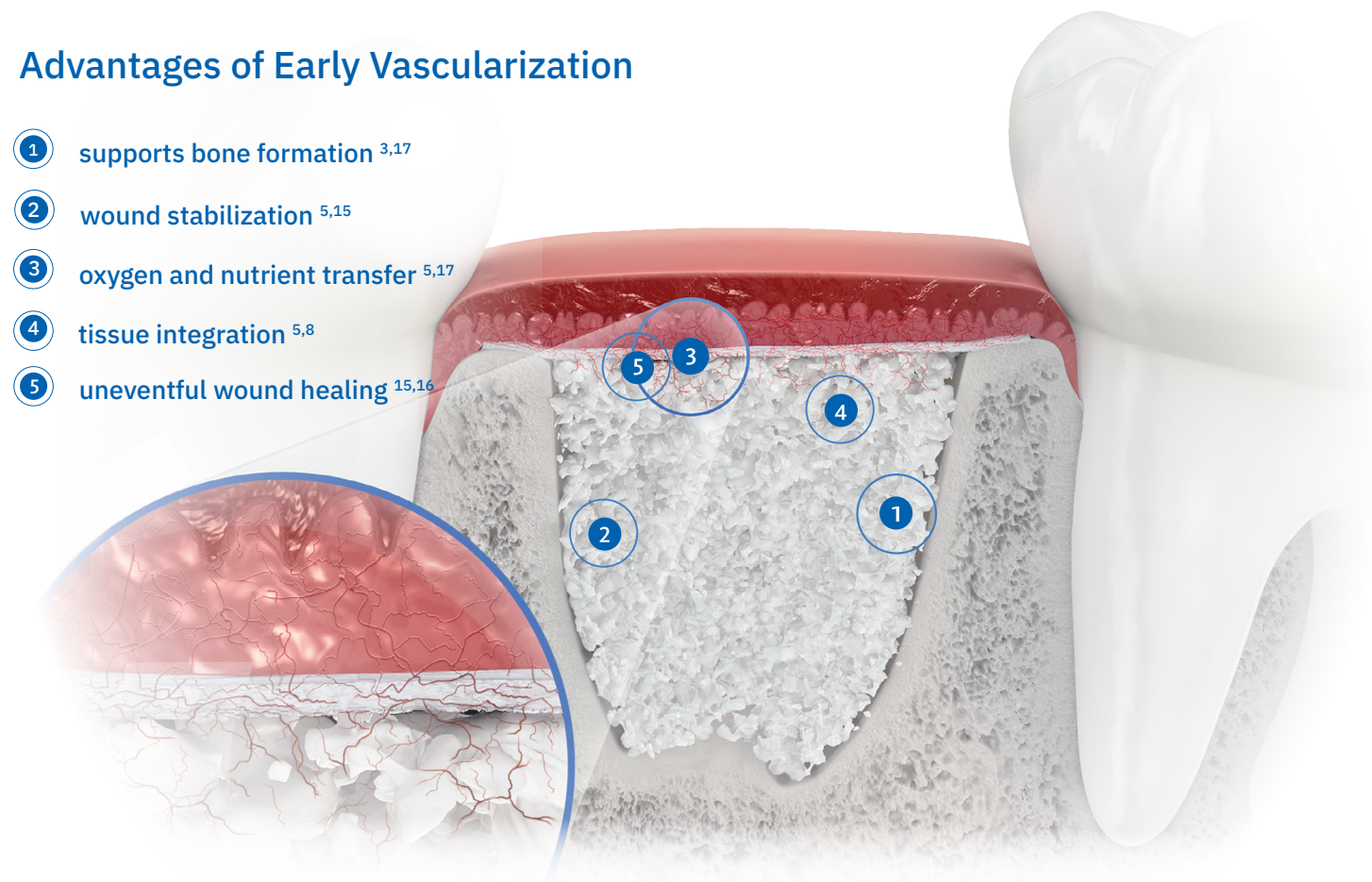


Scan for more information on Geistlich Bio-Gide®

Built for Regeneration

Advantages of Early Vascularization

- ① supports bone formation ^{3,17}
- ② wound stabilization ^{5,15}
- ③ oxygen and nutrient transfer ^{5,17}
- ④ tissue integration ^{5,8}
- ⑤ uneventful wound healing ^{15,16}



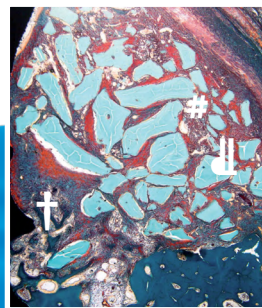
For clinical indications where both a physical matrix and a barrier are needed, Geistlich Bio-Oss® provides the volume and space preservation necessary to make it a natural companion to proven Geistlich Bio-Gide®.

Improved Bone Quality and Quantity

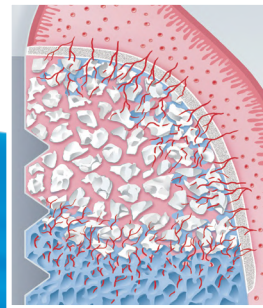
Geistlich Bio-Gide® provides excellent wound stability and graft containment. As demonstrated in the histological images below, the use of Geistlich Bio-Gide® with Geistlich Bio-Oss® results in significantly more bone formation and complete osseointegration than without a membrane.

Early and Complete Vascularization

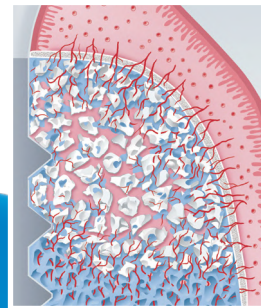
Membrane vascularization is a key step in bone and periodontal regeneration with Geistlich Bio-Gide®.



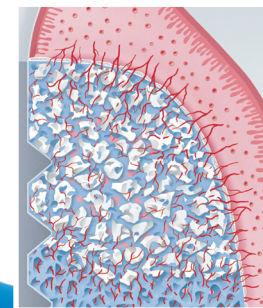
2 Weeks*
New bone formation is adjacent to the defect and underneath Geistlich Bio-Gide®³



2 Weeks
Wound healing is characterized by ongoing bone formation.



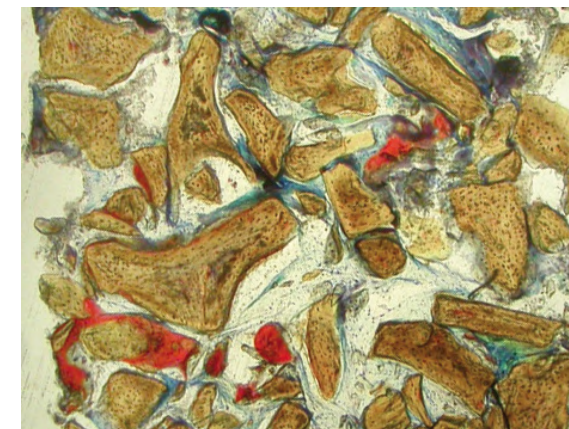
6 Weeks
Continual filling of the inter-trabecular spaces where maturation to lamellar bone begins.^{3,14}



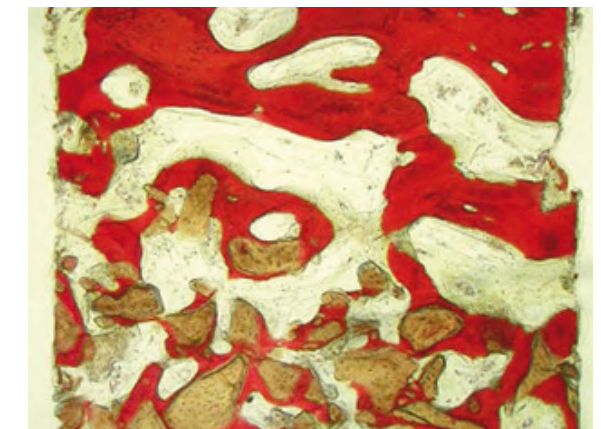
12 Weeks
Blood vessels surrounded by newly formed trabeculae of woven bone.

*** KEY**

- # Geistlich Bio-Gide®
- + Geistlich Bio-Oss Collagen®
- ↑ newly formed bone



Average new bone without Geistlich Bio-Gide®, connective tissue encapsulation of Geistlich Bio-Oss®
Red: New bone
Yellow: Geistlich Bio-Oss®
White: Connective tissue/bone marrow



Average new bone with Geistlich Bio-Gide®, complete osseointegration of Geistlich Bio-Oss®
Red: New bone
Yellow: Geistlich Bio-Oss® particles
White: Connective tissue/bone marrow

Geistlich Bio-Gide®

Extended Product Range



Geistlich Bio-Gide® Compressed

Geistlich Bio-Gide® Compressed is a resorbable collagen membrane possessing the same biological properties as Geistlich Bio-Gide®.

An Alternative Handling Option:

Suited for dentists who prefer a more **compact** membrane:

- › Compressed membrane, firmer feel
- › Smoother and more denser surface compared to Geistlich Bio-Gide®
- › Easier to trim



Geistlich Bio-Gide® Shape

Geistlich Bio-Gide® Shape is a pre-trimmed resorbable collagen membrane designed for the treatment of non-intact extraction sockets.

A Predictable Solution²²⁻²⁷ for Ridge Preservation:

- › Convenient – Developed and shaped specifically for non-intact extraction sockets
- › Easy Handling Application – Slower uptake of moisture prolongs the time available for the exact positioning of the material
- › Uneventful wound healing – in an open healing situation
- › Ready to Use: Pre-Trimmed for clinical use reduces preparation time



Geistlich Bio-Gide® Perio

Geistlich Bio-Gide® Perio is a resorbable collagen membrane with specific handling characteristics that make it ideal for periodontal indications.

Modified Structure Provides:

- › Slower uptake of moisture into the barrier
- › Prolonged working time
- › Firmer surface facilitates easier cutting of the material

Sterilized Templates for a Wide Range of Defects:

The outer blister pack includes four sterile templates, perforated to easily distinguish them from the membrane. These water repellent templates can be placed repeatedly in the region of the defect to allow customization of the template before cutting the membrane to the precise shape.

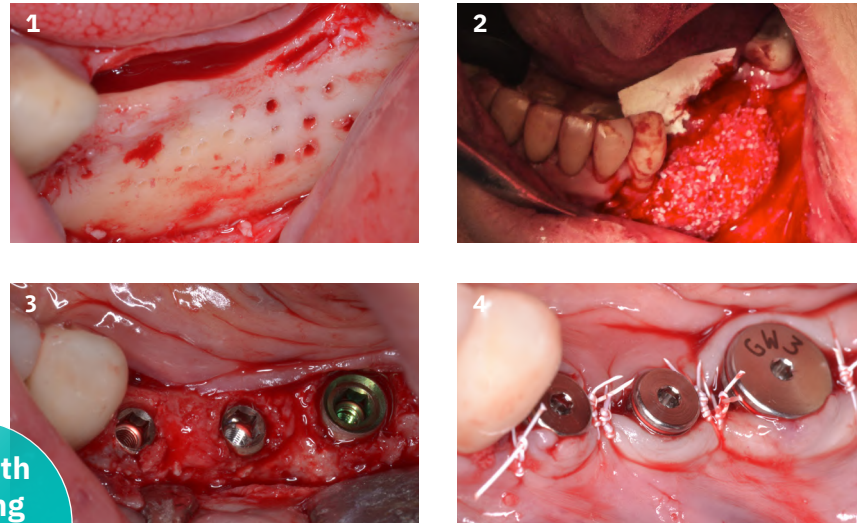


Lateral Ridge Augmentation in the Posterior Mandible

with Geistlich Bio-Gide®

Objective: Replacement of a failed 4 unit bridge #22 - #19, with a fixed prosthetic replacement. Implants to be placed following lateral ridge augmentation.

Conclusion: Following 8 months of healing, the augmented site showed sufficient bone width that was assessed with a CT scan. After examination of the bone width the implants were placed in the desired position.



8 month healing
At re-entry sufficient width for implant placement



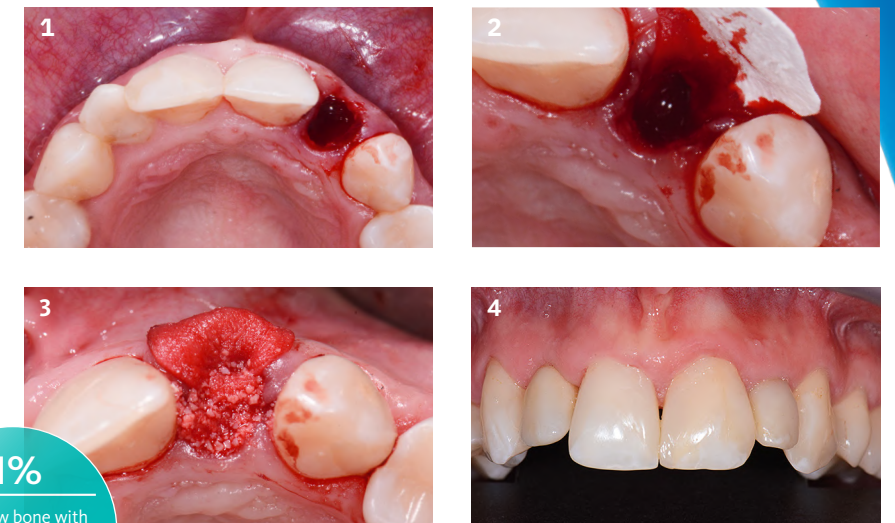
John M. Sisto D.D.S.
Park Ridge, IL. USA

Treatment of an Non-Intact Extraction Socket

with Geistlich Bio-Gide® Shape

Objective: Maintain alveolar ridge dimensions following atraumatic tooth extraction.

Conclusion: The alveolar height and width were maintained, resulting in a good esthetic outcome.



11%
More new bone with Geistlich Bio-Oss® and Geistlich Bio-Gide® vs. Geistlich Bio-Oss® alone®



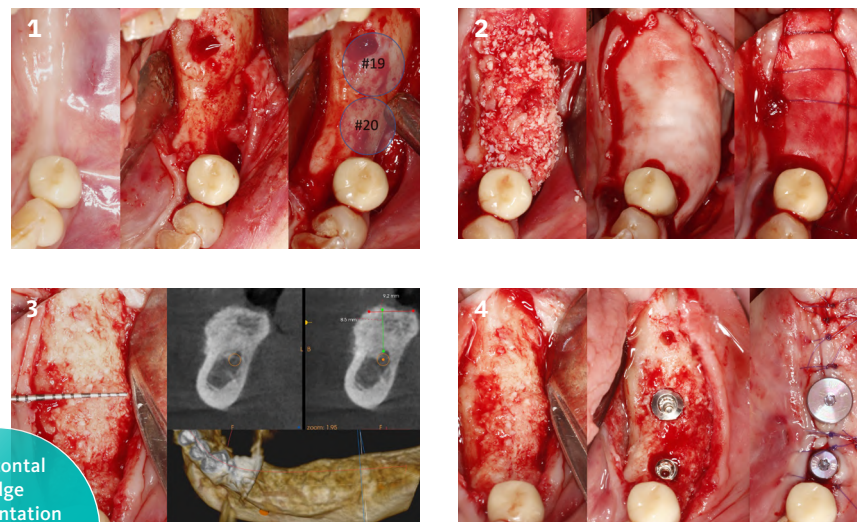
Dr. Marco Zeltner
Horgen, Switzerland

Horizontal Ridge Augmentation in the Posterior Mandible of a 90-Year-Old Female

with Geistlich Bio-Gide® Compressed

Objective: Replace a 90 year-old woman's failed bridge with horizontal ridge augmentation and implant place

Conclusion: The horizontal ridge augmentation procedure resulted in adequate bone for implant therapy. Implants for #19 and #20 were placed using a surgical guide based on a diagnostic wax up.



Horizontal Ridge Augmentation
In a 90-year-old patient



John Kim, D.M.D.,
Rocky Mount, NC.USA

Treatment of an Intrabony Defect

with Geistlich Bio-Gide® Perio

Objective: Functional and esthetic reconstruction of chronic periodontitis with deep intrabony defects.

Conclusion: After controlling the periodontal disease, this guided tissue regeneration technique leads to a long-term stable bony situation with an esthetic soft tissue appearance.



78%
Linear defect fill after 6 months with Geistlich Bio-Gide®



Dr. Frank Bröseler
Aachen, Germany

Everything you need for bone regeneration in one partner

At Geistlich, we understand that today's clinical situations require a broad array of product options.

That's why we've expanded our offerings to include quality products which complement the use of the Geistlich regenerative portfolio.



See our entire portfolio here:
www.geistlich.us/shop/



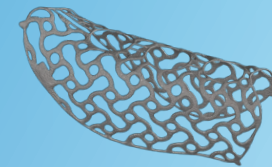
Geistlich Fibro-Gide®



Geistlich Mucograff®



Bone Harvesting Instruments



3D Titanium Scaffold Yxoss CBR®



vallos® / vallos-f®



Geistlich Bio-Oss®



Biologic Growth Factor GEM 21S®

Membrane Product Range



Geistlich Bio-Gide®

| Product Number | Product Description | Quantity/Volume |
|----------------|---------------------|-----------------|
| 20151 | Geistlich Bio-Gide® | 13 x 25 mm |
| 20152 | Geistlich Bio-Gide® | 25 x 25 mm |
| 500710 | Geistlich Bio-Gide® | 30 x 40 mm |
| 20153 | Geistlich Bio-Gide® | 40 x 50 mm |



Geistlich Bio-Gide® Compressed

| Product Number | Product Description | Quantity/Volume |
|----------------|--------------------------------|-----------------|
| 500363 | Geistlich Bio-Gide® Compressed | 13 x 25 mm |
| 500374 | Geistlich Bio-Gide® Compressed | 20 x 30 mm |



Geistlich Bio-Gide® Shape

| Product Number | Product Description | Quantity/Volume |
|----------------|---------------------------|-----------------|
| 500377 | Geistlich Bio-Gide® Shape | 14 x 24 mm |



Geistlich Bio-Gide® Perio

| Product Number | Product Description | Quantity/Volume |
|----------------|---------------------------|-----------------|
| 20148 | Geistlich Bio-Gide® Perio | 16 x 22 mm |



Geistlich Combi-Kit Collagen

Geistlich Bio-Gide® & Geistlich Bio-Oss Collagen®

| Product Number | Product Description | Quantity/Volume |
|----------------|------------------------------|--|
| 20146 | Geistlich Combi-Kit Collagen | Geistlich Bio-Gide® 16 x 22 mm Geistlich Bio-Oss Collagen® 100 mg |



Geistlich Perio-System Combi-Pack

Geistlich Bio-Gide® Perio & Geistlich Bio-Oss Collagen®

| Product Number | Product Description | Quantity/Volume |
|----------------|-----------------------------------|--|
| 20147 | Geistlich Perio-System Combi-Pack | Geistlich Bio-Gide® Perio 16 x 22 mm Geistlich Bio-Oss Collagen® 100 mg |

Geistlich Pharma North America, Inc.
Princeton, NJ 08540
Customer Care Toll-free: 855-799-5500
info@geistlich.com
<https://geistlich.us>

Your Partner in a Strong Foundation

Assurance

Your assurance, our long-term evidence. Scientifically proven in over 1400 publications.

Proven Outcomes

Over 15 million successfully treated patients worldwide.²⁸

Trustworthy

Every 15 seconds a Geistlich product is used.²⁸

For more information, please visit:
www.geistlich.us

CAUTION: Federal law restricts these devices to sale by or on the order of a dentist or physician.

For more information on contraindications, precautions, and directions for use, please refer to the Instructions for Use at:
<https://www.geistlich-na.com/dental-professionals/instructions-for-use>

References:

- 1 iData Research Inc., US Dental Bone Graft Substitutes and other Biomaterials Market, 2015.
- 2 iData Inc., European Dental Bone Graft Substitutes and other Biomaterials Market, 2015.
- 3 Schwarz, F. et al. (2008). Clin Oral Implants Res. 19(4): 402-409.
- 4 Von Arx, T. et al. (2006). Clin Oral Implants Res. 17(4): 359-356.
- 5 Schwarz, F. et al. (2006). Clin Oral Implants Res. 17(4): 403-409.
- 6 Becker, J. et al. (2009). Clin Oral Implants Res. 20(7): 742-749.
- 7 Schwarz, F. et al. (2014). Clin Oral Implants Res. 25(9): 1010-1015.
- 8 Rothamel, D. et al. (2005). Clin Oral Implants Res. 16: 369-378.
- 9 Zitzmann, NU. et al. (1997). Int J Oral Maxillofac Implants. 12(6): 844-852.
- 10 Tran, KT. et al. (2004). Wound Repair Regen. 12(3): 262-268.
- 11 Pilcher, BK. et al. (1997). J Cell Biol. 137(6):1445-1457.
- 12 Rothamel, D. et al. (2004). Clin Oral Implants Res. 15(4): 443-449.
- 13 Bertolo, A. et al. (2012). Eur Spine J. 6: 826-838.
- 14 Jerosch, J. et al. (2002). Georg Thieme Verlag. ISBN 3-13-13292-1.
- 15 Becker, J. et al. (2009). Clin Oral Implants Res. 20(7): 742-749.
- 16 Tahl, H. et al. (2008). Clin Oral Implants Res. 19(3): 295-302.
- 17 Wang, Y. et al. (2007). Ann NY Acad Sci. 1117: 1-11.
- 18 Buser, D. et al. (2011). J Periodontol. 82(3): 342-349.
- 19 Annen, BM. et al. (2011). Eur J Oral Implantol. 4(2): 87-100.
- 20 Pjetursson, BE. et al. (2008). J Clin Periodontol. 35: 216-240.
- 21 Knöfler W, et al., Int J Implant Dent. 2016 Dec; 2(1):25.
- 22 Avila-Ortiz, G. et al. (2014). J Dent Res. 93(10): 950-8.
- 23 Morjaria, KR. et al. (2014). Clin Implant Dent Relat Res. 16(1): 1-20.
- 24 Horvath, A. et al. (2013). Clin Oral Investig. 17(2): 341-63.
- 25 Vittorini Orgeas, G. et al. (2013). Int J Oral Maxillofac Implants. 28(4): 1049-61.
- 26 Vignoletti, F. et al. (2012). Clin Oral Implants Res. 23Suppl(5): 22-38.
- 27 Weng, D. et al. (2011). Eur J Oral Implantol. 4Suppl: 59-66.
- 28 Data on File Geistlich Pharma AG, Wolhusen, Switzerland.