

Geistlich Micross

Minimally Invasive
Cortical Bone
Collector

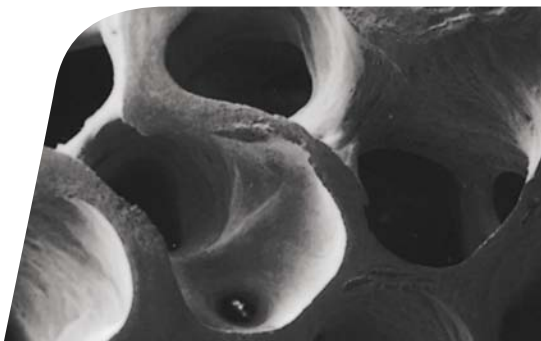


Geistlich
Biomaterials

CE
0123

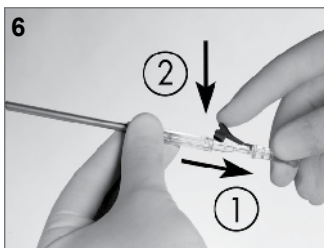
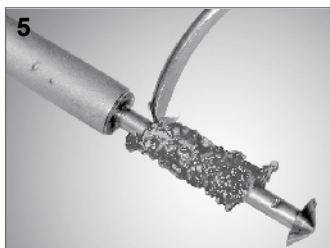
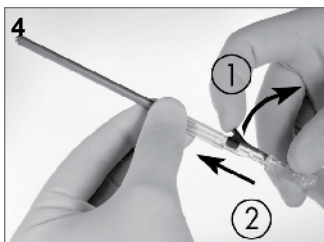
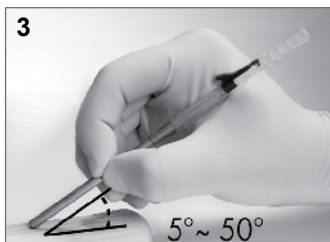
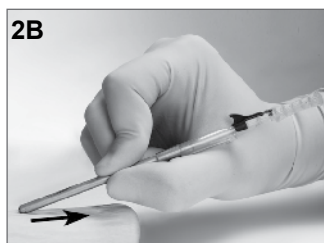
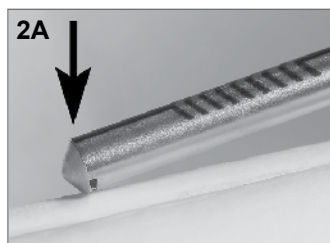


STERILE EO





INSTRUCTIONS FOR USE

Minimally Invasive Cortical Bone Collector



INTENDED USE

The Geistlich Micross is a minimally invasive tool designed for the collection of autogenous bone in oral surgery applications.

- Before use, check that the package is intact.
 - Do not use the product if the package is damaged.
 - The Geistlich Micross device must be used exclusively by a skilled clinician.
 - The clinician must assess the suitability of patients for bone grafting and the appropriate surgical procedure.
 - The clinician must take all necessary precautions to prevent the risk of infection and complications associated with bone grafting.
-  • The Geistlich Micross device is a single-use instrument. DO NOT clean or sterilize after use.
- Warning: if it is reused on another patient, there is a risk of cross-contamination and loss of performance and functional characteristics of the device.
 - Always wear sterile gloves when handling the Geistlich Micross device and strictly follow the procedures in order to guarantee a sterile environment. Make sure you do not cut sterile gloves with the sharp end of the tool.
 - Discard after use in special medical waste containers in compliance with the regulations in force.
 - The manufacturer does not bear any responsibility for improper use of the product.
- 1 Open the package from the side showing the symbol.  Lay the device on a sterile field and strictly follow the procedures in order to guarantee a sterile environment.
 - 2 The device must be held with the markings on the barrel of the instrument facing the operator. Place your fingers as shown in Fig. 1A and 1B and hold securely to ensure precise and controlled movements during use.
 - 3 Collect the bone by pressing the front end of the device (blade) on to the surface of the bone (See Fig. 2A) while simultaneously pulling the device in a backward motion (see Fig. 2B). Bone can be collected from flat and hollow surfaces, with a working angle between 5° and 50° (See Fig. 3). Vary the angle of the device and the pressure applied to obtain the required amount and consistency of bone chips or shavings. The Geistlich Micross reservoir can store up to 0.25 cc of bone.
 - 4 To access the collected bone, place the device on a sterile container, then release the lever (See Fig. 4) and slide the handle of the device forward until completely extended. Use a sterile instrument to remove the collected bone from the chamber (See Fig. 5). To collect additional bone, bring the handle back to its original position and place the lever in the locked position (See Fig. 6).

USEFUL TIPS

In the event of poor cutting quality, adjust the angle of the device and apply additional pressure on the bone. If the cutting quality is not improved, open the chamber, remove the collected bone and attempt to collect additional bone. If this does not provide improved performance then the blade may be worn. Change the device.

These instructions for use as well as further information about the Geistlich Micross are available online: www.geistlich-na.com

Geistlich
Micross

Geistlich
Biomaterials

Customer Care
Toll-free 855-799-5500

www.geistlich-na.com

Geistlich Pharma North America, Inc.
202 Carnegie Center
Princeton, NJ 08540

G-266-15P REV.00



C.G.M. S.p.A.
DIVISIONE MEDICALE META

Via E. Villa, 7 - 42124 Reggio Emilia - ITALY